



Music Literacy (clef)

www.mypanyard.co.uk



Basic Music Literacy

www.mypanyard.co.uk

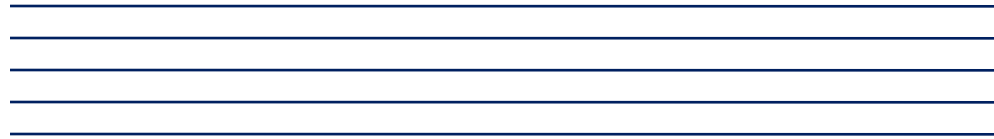
Music literacy is a language used to share music through reading and writing.

This language is written using special symbols that tell you what to play and how to play it.



The Clef

www.mypanyard.co.uk

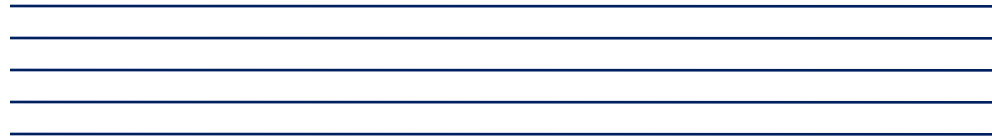


The clef is a musical symbol used to name a note on a line of the stave.


You can find out what the other notes are from the clef.

The Clef

www.mypanyard.co.uk



The main types of clef:

Treble - G clef  G

Bass - F clef  F

The Treble Clef

www.mypanyard.co.uk



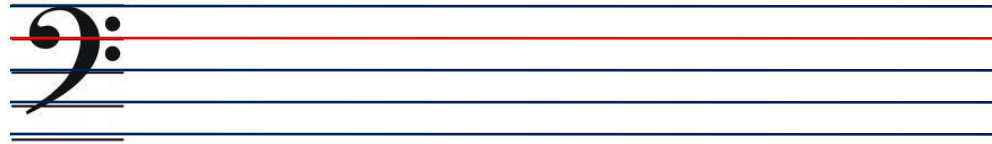
The treble clef is used for high pitched instruments.

It is placed on the second line of the stave.

The frontline pans use the treble clef.

The Bass Clef

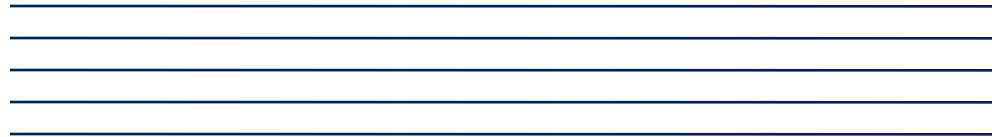
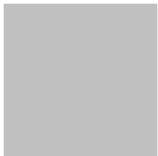
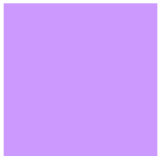
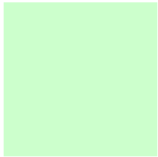
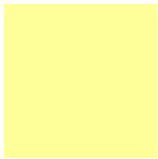
www.mypanyard.co.uk



The bass clef is used for low pitched instruments.

It is placed on the fourth line of the stave.

The mid-range and background pans use the bass clef.



Music Literacy (clef)

www.mypanyard.co.uk

